

CREATING COMMUNITY PATHWAYS FOR LEARNING

A contextual, integrated approach local curriculum design

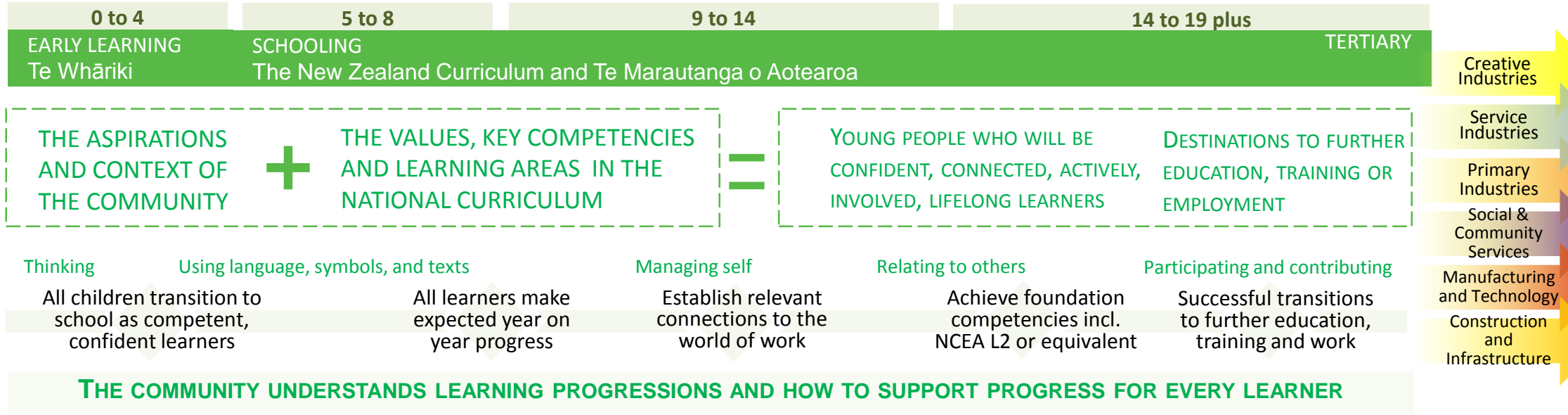
WE WANT EVERY LEARNER TO HAVE:

A **personalised pathway** that provides a **foundation of education** and opportunities to succeed in **further education and the world of work** so that every learner has the skills to participate and succeed in our economy and society

This pathway needs to link **across the learning journey**

Based on a **community-developed learner profile** linking:

Which informs **shared capability profiles** at key transitions:



New ways of working to create **personalised learning pathways** so that all learners are supported to achieve the capabilities in each profile

1. A rich curriculum, that reflects local priorities and provides for project-based, integrated, contextualised, relevant learning
2. Enabling all students to study in quality Māori medium education settings throughout their education journey
3. Learning Support and individual plans to provide the right support, at the right time, to ensure every learner progresses

HOW WE WILL ACHIEVE THIS

Partnerships, underpinned by new pathway and curriculum tools

Communities of learning Kāhui Ako Contribution	Collaborating with parents and whānau to design rich curriculum that reflect local priorities, identities, languages, and cultures.	Providing a range of learning experiences across the Kāhui Ako, including outside the traditional classroom.	Preparing students for tertiary learning, industry training or the world of work, and fostering key competencies and employability skills
	Transition portfolios provide a rich picture of a student's strengths, interests and learning dispositions.	Schools working together to widen and enrich curriculum choice.	
Community, tertiary and employer contribution	Industry visits, work experiences, and related projects	Using STAR and Gateway to support transition experiences	Suitable work placements, tertiary and industry training courses
		Secondary-Tertiary partnerships	
Ministry of Education contribution	DATA AND EVIDENCE Regional Economic Data to inform understanding of the regional context. Individual progress and attainment data to identify 'names, numbers, and needs' The FindMyPath website with information about education pathways, qualification to job information, and careers in six areas aligned to the Vocational Pathways	TOOLS AND SUPPORTS PaCT and TWA – online tools that support teaching and learning progression frameworks to illustrate stages of learning The Communities of Learning Kāhui Ako Local Curriculum Smart Tool to help communities build a shared local curriculum Vocational Pathways to provide students and whānau with clear links to future employment, study or training opportunities Te Rāngai Kāhui Ako ā-Iwi to identify and share best practice in Māori medium education.	EXPERTISE AND ADVICE Expert partners – academics and teaching practitioners to help make sense of evidence and choose a course. PLD – Centrally funded professional learning and development Making use of existing resources: Resource Teachers Learning and Behaviour (RTLb) and Resource Teachers Māori (RTM). Working with the Tertiary Education Commission (TEC) and tertiary providers to learn from the lessons of ARONA